



Beyond Sustainability

Doing business and doing good

CREPES & WAFFLES®

Beyond Sustainability



Friday

April 13th 1980

Crepes & Waffles is born



CREPES & WAFFLES®

Beyond Sustainability

Stories
that make us humane



Serve and work
from love

Woman as a pillar
of **progress**

Crepes & Waffles

As a tool to **transform lives**

Humanize the
economy

Diversify
gastronomic culture

CREPES & WAFFLES.

Beyond Sustainability



Another **logic**



CREPES & WAFFLES®

Beyond **Sustainability**

6 COUNTRIES

Chile
España
México
Ecuador
Perú
Colombia

37
years on the
market

200
Stores

22
millions
of users
per year

189
SALT
Crepes, pitas,
salads,
pannecook y
soups

125
SWEET
Crepes,
Waffles,
Mini-waffles
and Ice Cream

78
DRINKS
Natural juices,
smoothies,
soda, coffee
tea, wine and
beer

CREPES & WAFFLES®

Beyond **Sustainability**

4000

Employees

**Premium
Medicine**
plans

91%


of employees
are women

Minimum wage
higher than the
established minimum
wage

75%

Employed
**female head of
household**

0% interest loans
**for housing, health
and education**

A close-up photograph of a human hand, palm up, holding a large quantity of small, reddish-brown lentils. The lentils are piled in the center of the palm and spill slightly over the fingers. The background is a blurred, natural setting with green foliage and a path, suggesting an outdoor environment. The lighting is soft and natural, highlighting the texture of the skin and the lentils.

Nowadays, humanity faces new
environmental and social
challenges

Planetary Boundaries



Nitrogen and
Phosphorus
cycle

Biodiversity

Climate Change

Land System Change

Ecosystem Services 2011
\$142 Trillion



**“If Earth biodiversity were a country,
it could be called Colombia”**

National Geographic

How are we going to develop?

Minning

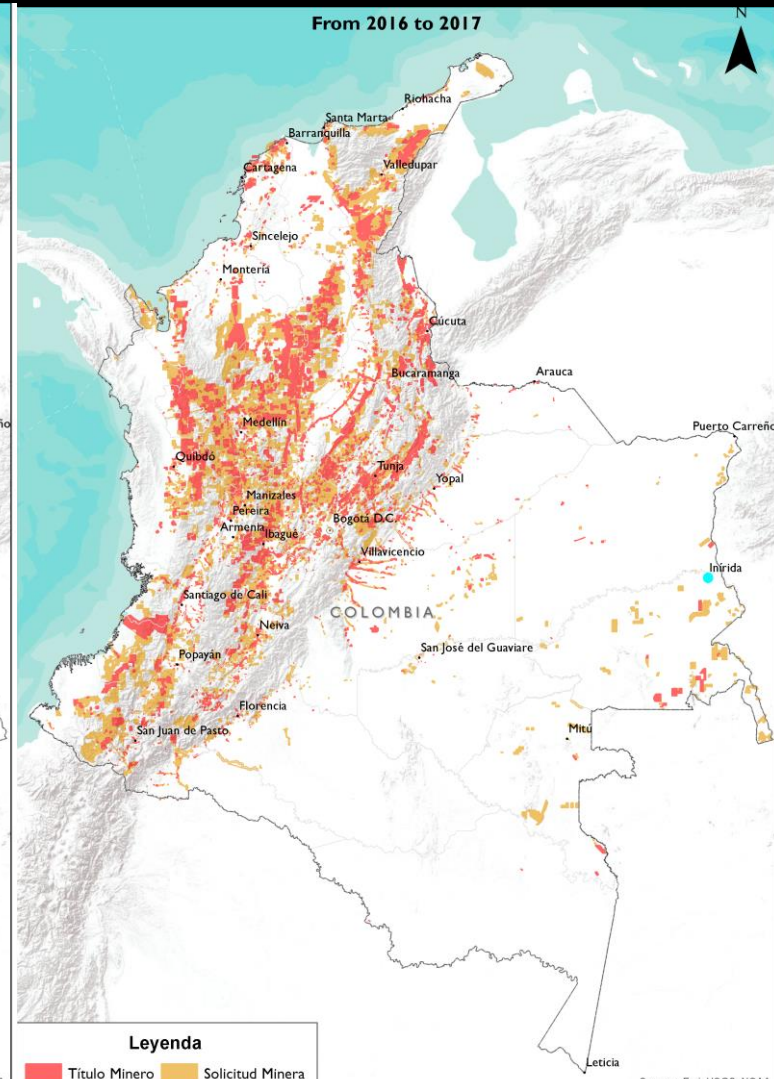
Soy

Innovate with our
biodiversity

From 2001 to 2002



From 2016 to 2017



CREPES & WAFFLES.

Beyond **Sustainability**

How do we transit from a culture that decimates life, to a culture **that enhances life systems and people?**

How do we re connect with **one self, others and nature?**

Regeneration

CREPES & WAFFLES.

Beyond Sustainability



Path to **regeneration**

Smallholders are the guardians
of food, land and culture



